

monica AND FRIENDS[®]



INSTITUTO
MAURÍCIO
DE SOUSA

Sale prohibited - free distribution



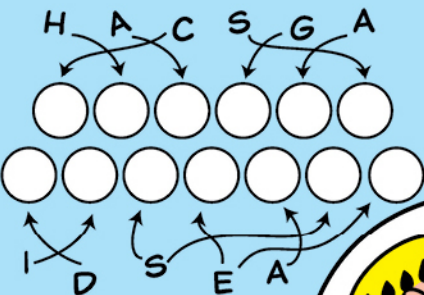
MAURICIO

CHAGAS DISEASE

FUN & GAMES

FILL IN THE LETTERS TO REVEAL WHAT DISEASE THE KISSING BUG TRANSMITS!

RESP: CHAGAS DISEASE



CROSS OUT THE LETTERS B, F, M AND P IN THE TABLE BELOW TO REVEAL WHO FIRST DISCOVERED CHAGAS DISEASE!

RESP: CHAGAS DISEASE

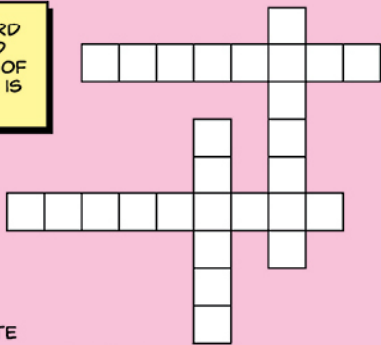
B	C	F	M	A	P	R	F
M	F	L	P	M	O	B	S

C	P	M	H	B	F	A	P
P	G	F	B	A	M	P	S



FILL IN THE CROSSWORD WITH THE UNDERLINED WORDS FROM THE LIST OF WAYS CHAGAS DISEASE IS TRANSMITTED!

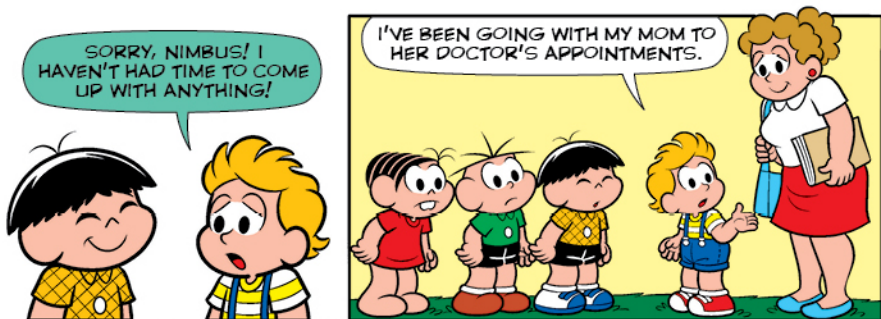
RESP: HORIZ: DONATION, EXPECTANT. VERT: EATING, KISSING.

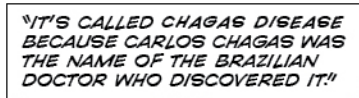
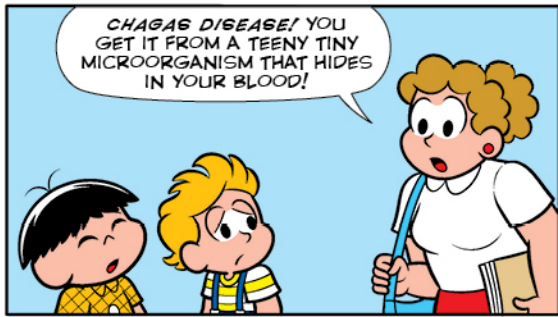
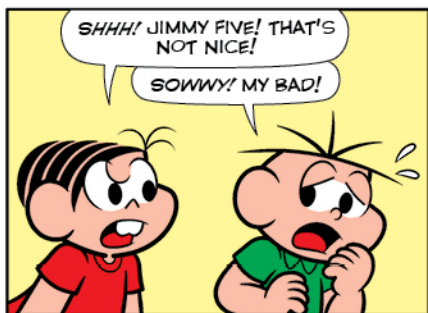


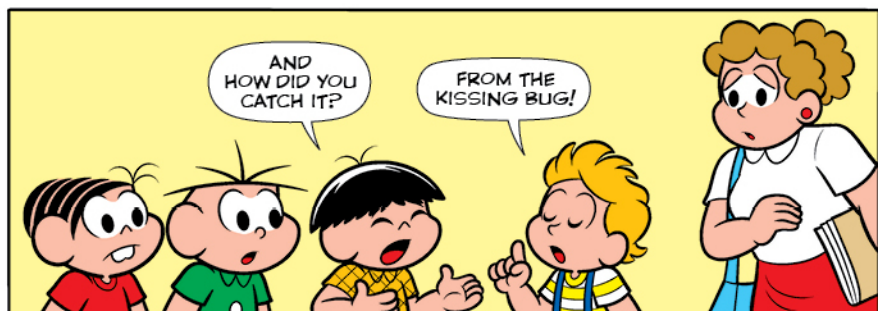
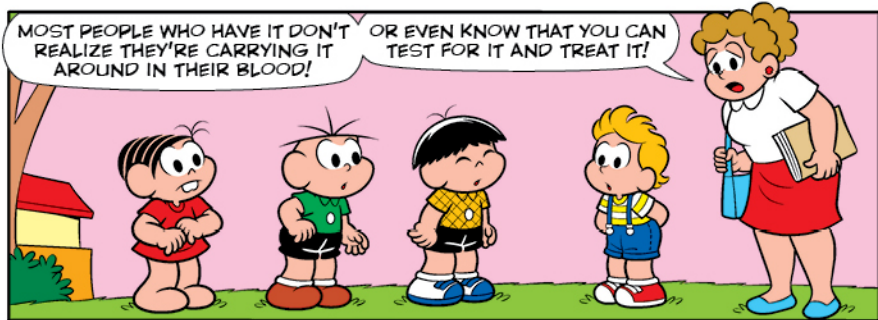
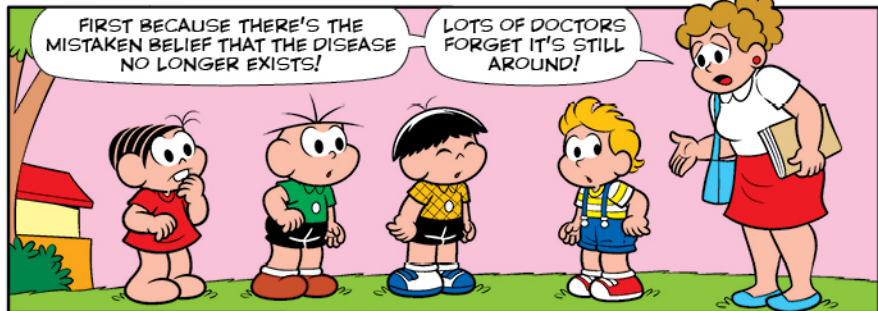
- KISSING BUG BITE
- INFECTED EXPECTANT MOTHER
- INFECTED BLOOD OR ORGAN DONATION
- EATING CONTAMINATED FOOD



NOT TOO LONG AGO ON LEMON TREE STREET...



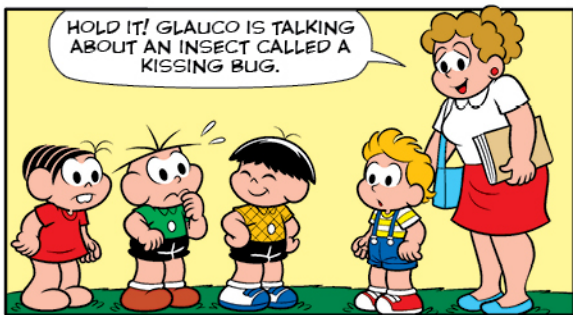




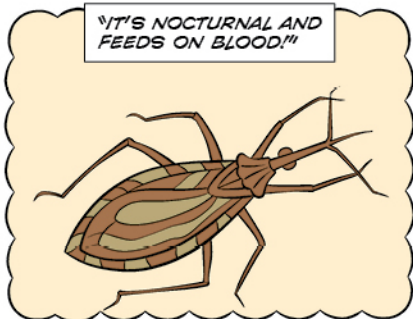
MY GOSH! I'LL NEVER KISS ANYONE EVER!



HOLD IT! GLAUCO IS TALKING ABOUT AN INSECT CALLED A KISSING BUG.



"IT'S NOCTURNAL AND FEEDS ON BLOOD!"

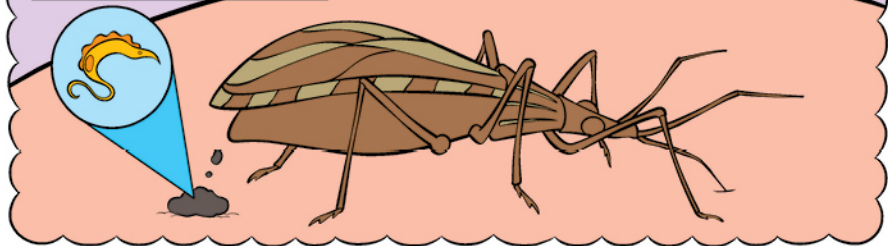


"IT'S CALLED A KISSING BUG BECAUSE IT RATHER LIKES HUMAN FACES!"



"THE DISEASE IS ACTUALLY NOT TRANSMITTED THROUGH THE BUG BITE..."

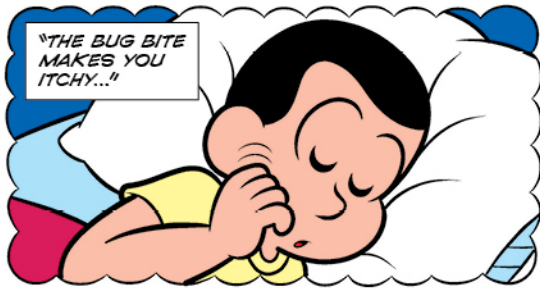
"BUT THROUGH THE DISEASE-CAUSING PARASITE* IN THE POOP THE BUG LEAVES WHILE BITING!"



OOOH! THAT'S DISGUSTING!

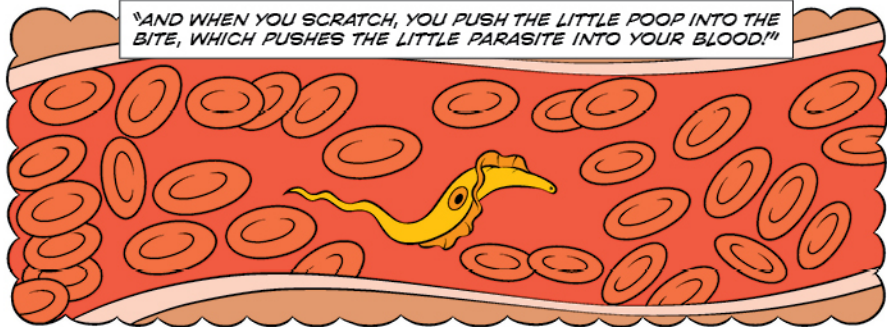


"THE BUG BITE MAKES YOU ITCHY..."



*A PARASITE SURVIVES BY LODGING IN AND FEEDING OFF ANOTHER BODY.

"AND WHEN YOU SCRATCH, YOU PUSH THE LITTLE POOP INTO THE BITE, WHICH PUSHES THE LITTLE PARASITE INTO YOUR BLOOD!"



"ONE OF THE SIGNS THAT YOU'VE BEEN BITTEN BY A KISSING BUG..."



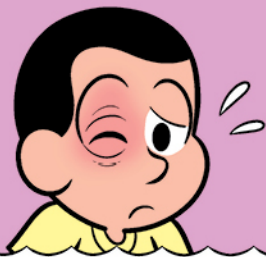
"IS A RED-COLORED SWELLING AT THE SITE OF THE BITE!"



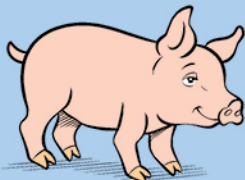
"IF YOU'RE BITTEN CLOSE TO YOUR EYE, YOU'LL GET ROMAÑA'S SIGN..."



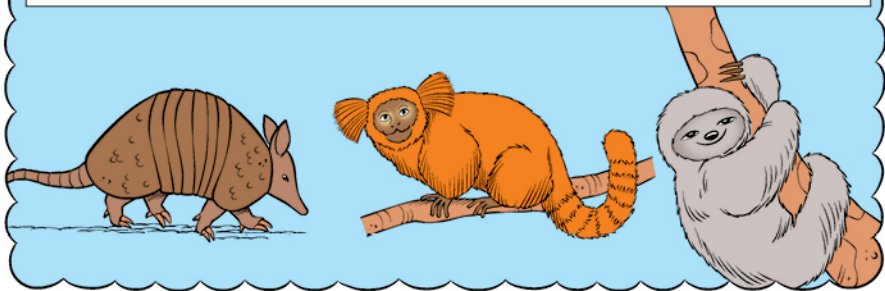
"MEANING YOUR EYELIDS GET BIG AND SWOLLEN!"



"KISSING BUGS ALSO LIKE BLOOD FROM OTHER PETS AND DOMESTICATED ANIMALS LIKE DOGS, CATS AND PIGS..."



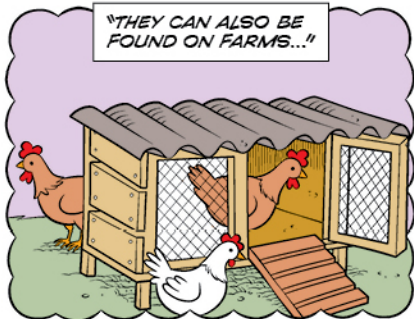
"AND FROM WILD ANIMALS LIKE ARMADILLOS, MARMOSETS, SLOTHS AND OTHERS!"



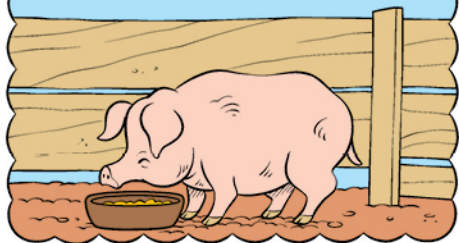
"SO THEY LIVE IN PLACES WHERE THEY CAN GET A GOOD SUPPLY OF BLOOD! IN NATURE, THAT MEANS IN TREES, NESTS, DENS AND SO ON!"



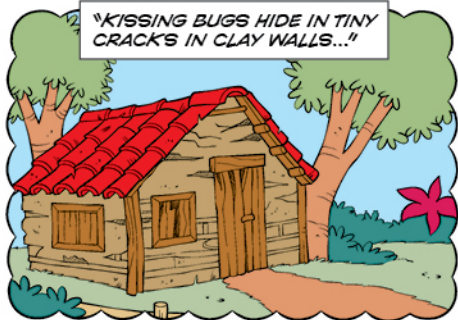
"THEY CAN ALSO BE FOUND ON FARMS..."



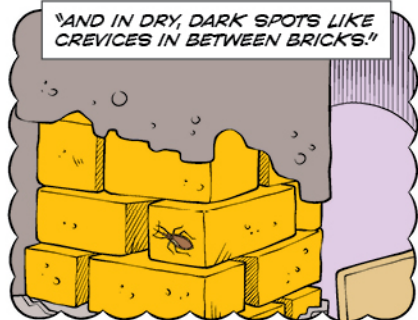
"LIKE IN CHICKEN COOKS, PIGSTIES AND PIGEON LOFTS!"



"KISSING BUGS HIDE IN TINY CRACKS IN CLAY WALLS..."

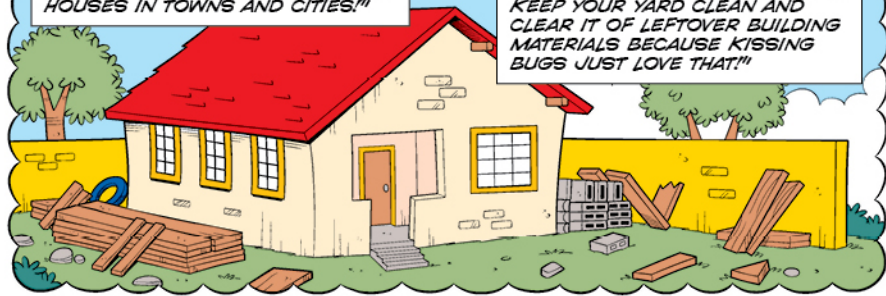


"AND IN DRY, DARK SPOTS LIKE CREVICES IN BETWEEN BRICKS!"



"THEY'VE EVEN BEEN FOUND INSIDE HOUSES IN TOWNS AND CITIES!"

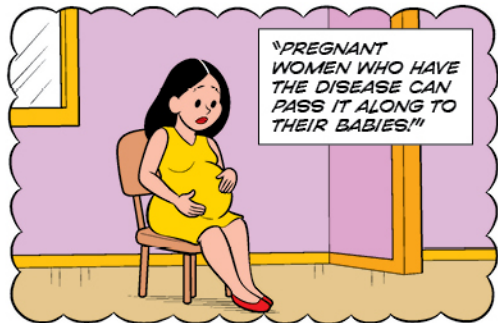
"THAT'S WHY YOU SHOULD ALWAYS KEEP YOUR YARD CLEAN AND CLEAR IT OF LEFTOVER BUILDING MATERIALS BECAUSE KISSING BUGS JUST LOVE THAT!"



THERE ARE OTHER WAYS CHAGAS DISEASE IS TRANSMITTED.



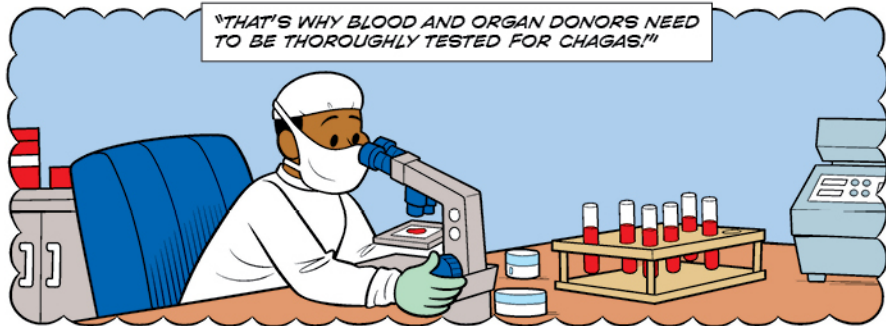
"PREGNANT WOMEN WHO HAVE THE DISEASE CAN PASS IT ALONG TO THEIR BABIES!"

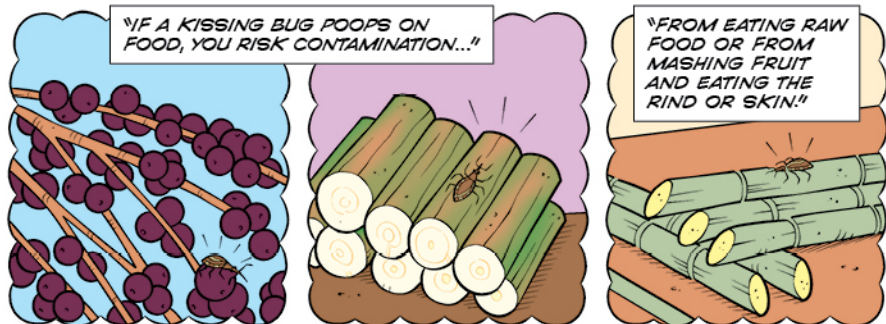
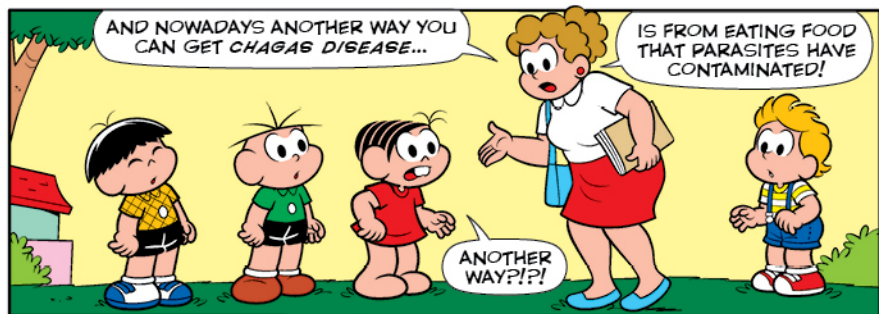


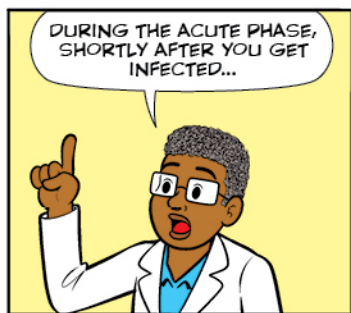
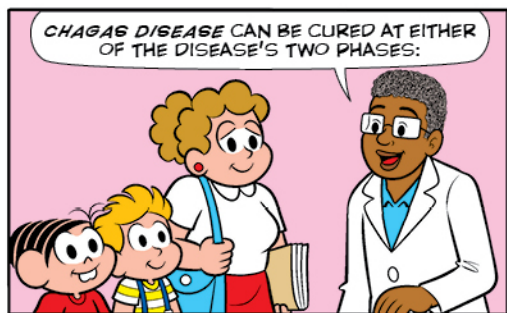
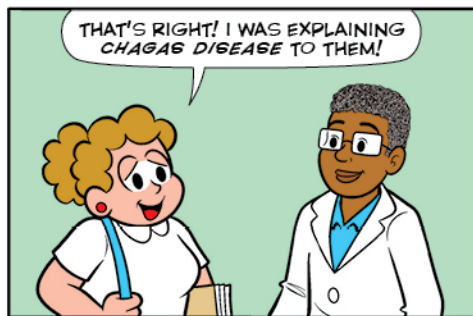
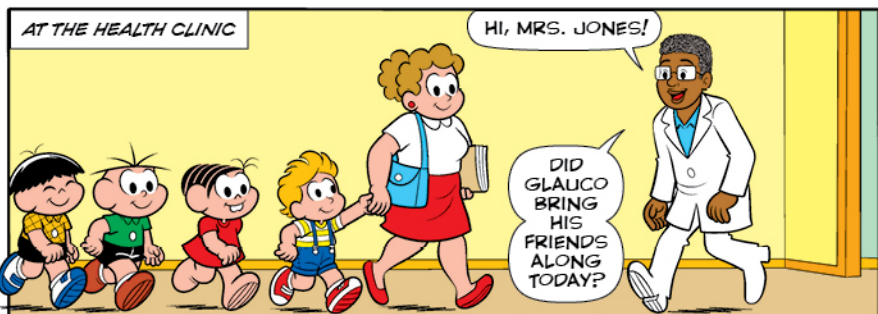
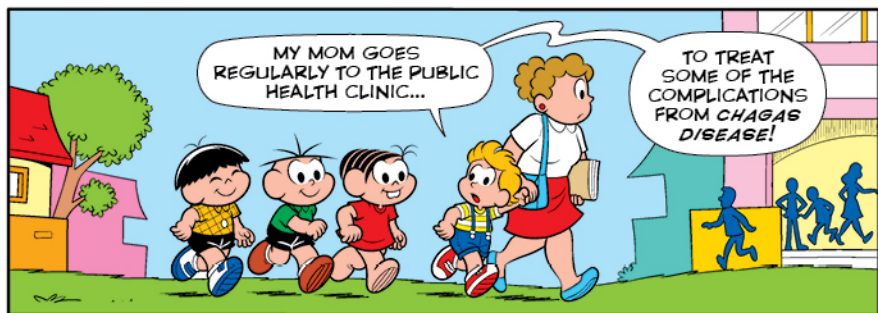
"YOU CAN ALSO GET IT FROM A CONTAMINATED BLOOD TRANSFUSION OR ORGAN TRANSPLANT!"



"THAT'S WHY BLOOD AND ORGAN DONORS NEED TO BE THOROUGHLY TESTED FOR CHAGAS!"







"THAT'S WHEN YOU SEE SYMPTOMS LIKE FEVERS THAT LAST FOR MORE THAN SEVEN DAYS..."



"WEAKNESS, AND SWELLING IN THE FACE AND LEGS!"

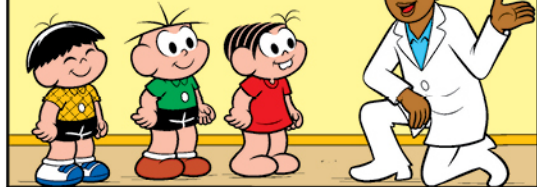


"IN THIS PHASE, THERE ARE STILL LOTS OF MICROSCOPIC PARASITES IN THE BLOOD..."

"AND YOU CAN DIAGNOSE CHAGAS DISEASE WITH A SIMPLE BLOOD TEST THAT DETECTS THE PARASITES!"



THE EARLIER YOU TREAT THE DISEASE, THE BETTER THE CHANCES OF FULL RECOVERY!

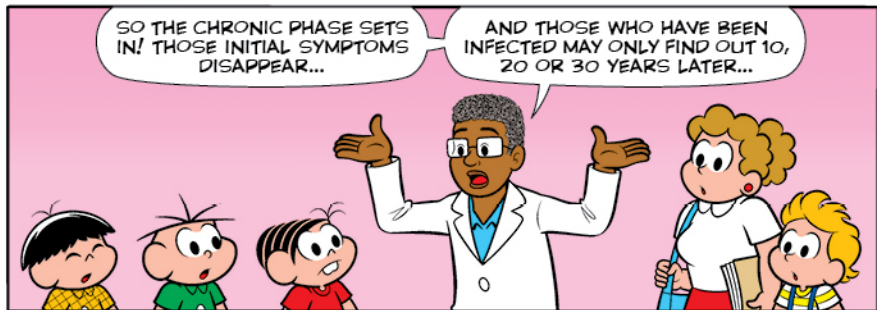


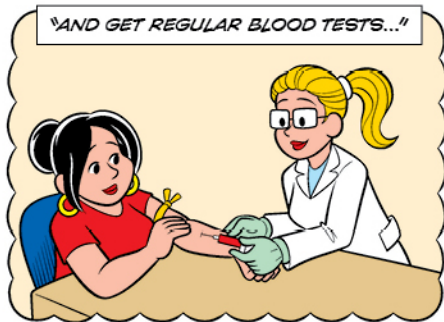
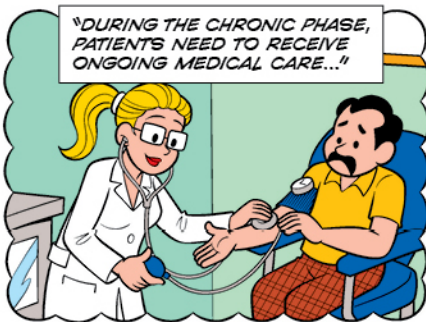
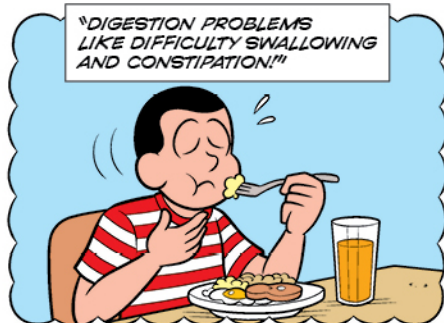
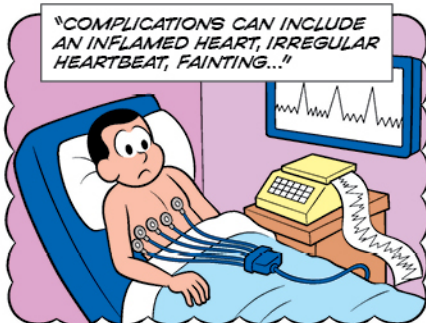
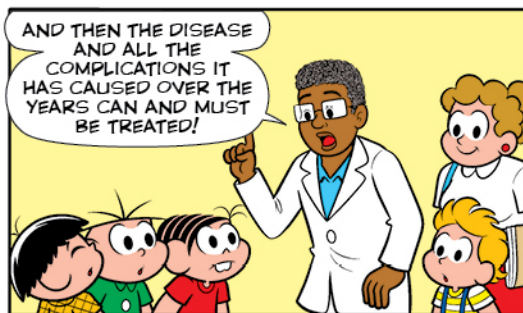
IF THE DISEASE IS NOT DETECTED IN THE ACUTE PHASE, IT'S USUALLY BECAUSE THE PERSON SHOWS NO SYMPTOMS AND DOESN'T EVEN KNOW THEY'VE BEEN BITTEN!



SO THE CHRONIC PHASE SETS IN! THOSE INITIAL SYMPTOMS DISAPPEAR...

AND THOSE WHO HAVE BEEN INFECTED MAY ONLY FIND OUT 10, 20 OR 30 YEARS LATER...





AS SOON AS WE FOUND OUT MY MOM HAD CHAGAS DISEASE, YOU ORDERED A BLOOD TEST FOR ME!

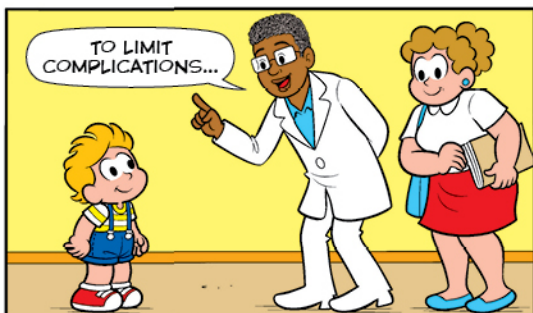
THAT'S RIGHT, GLAUCO! AND IT CAME BACK NEGATIVE!



IT'S VERY IMPORTANT TO DIAGNOSE AND TREAT THE DISEASE AS SOON AS POSSIBLE...

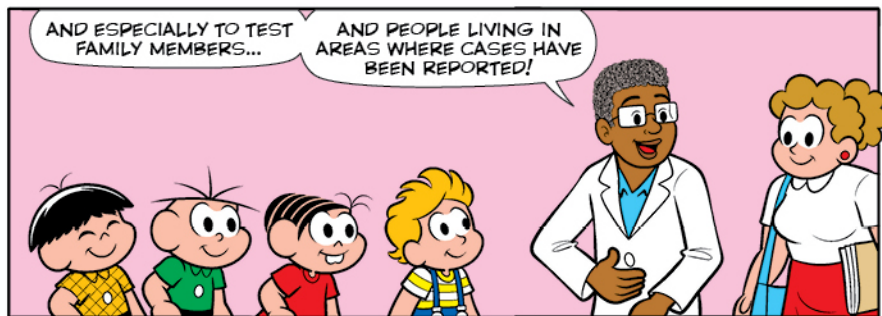


TO LIMIT COMPLICATIONS...



AND ESPECIALLY TO TEST FAMILY MEMBERS...

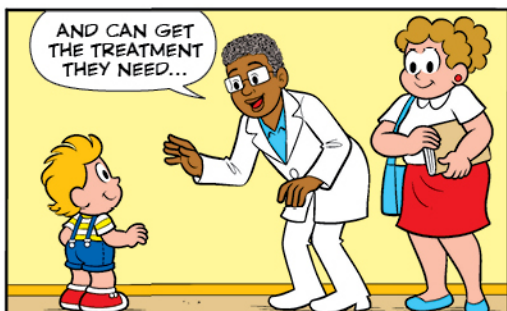
AND PEOPLE LIVING IN AREAS WHERE CASES HAVE BEEN REPORTED!

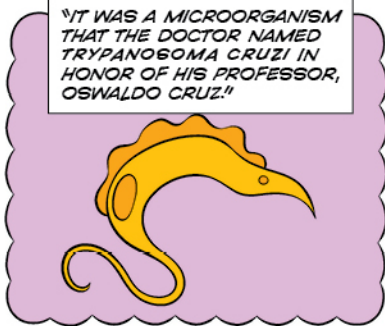
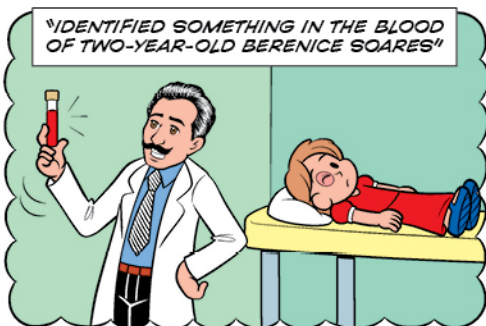
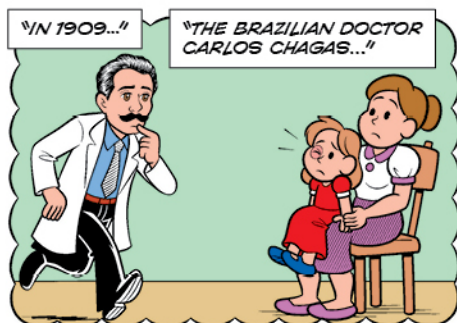
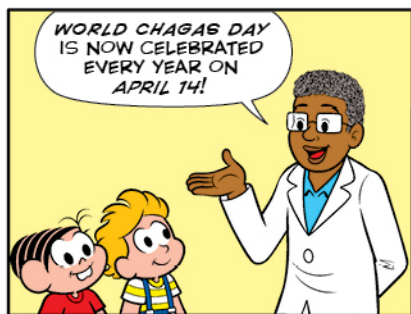


SO THAT THE MILLIONS OF PEOPLE WITH CHAGAS DISEASE AREN'T OVERLOOKED...

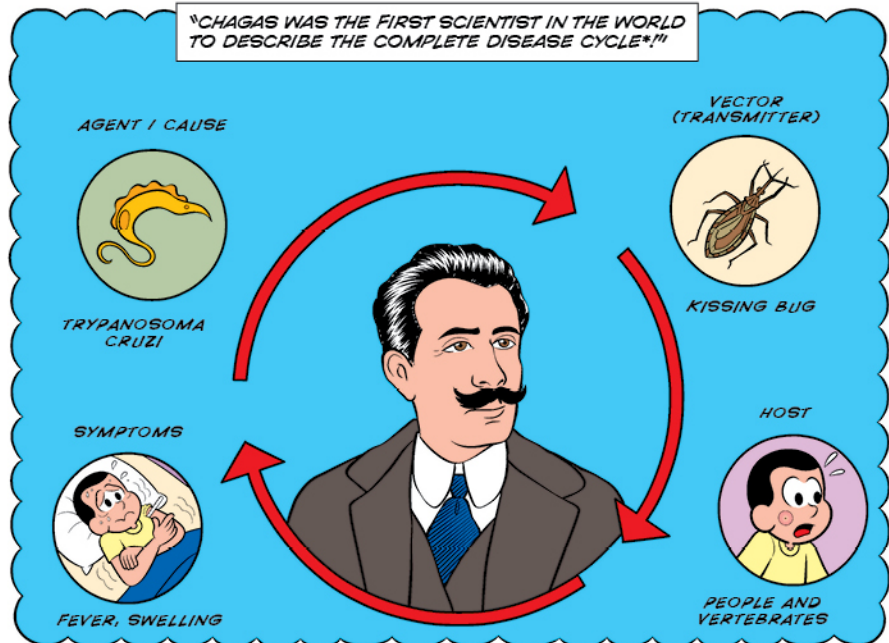


AND CAN GET THE TREATMENT THEY NEED...

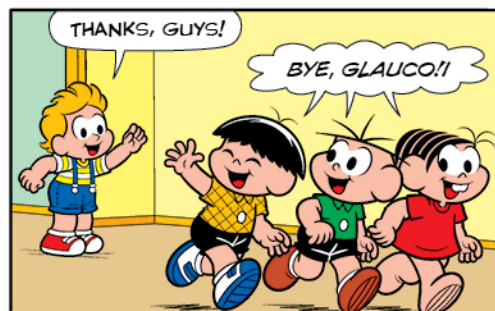
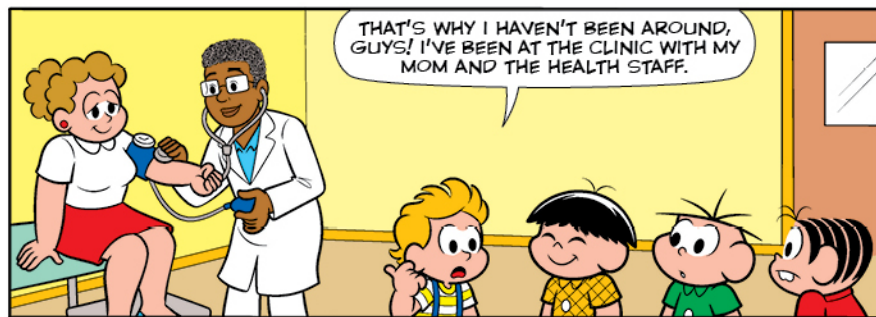
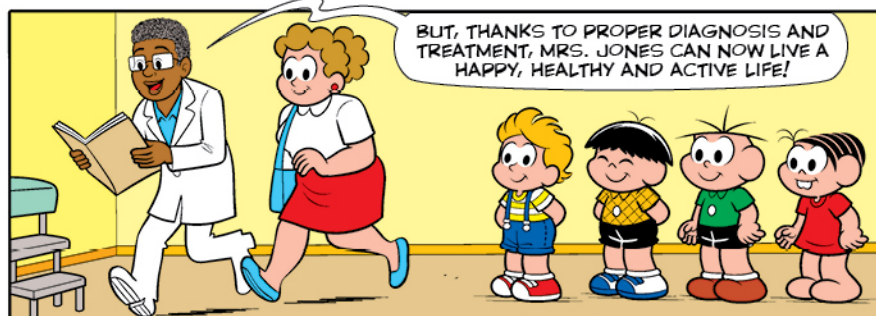
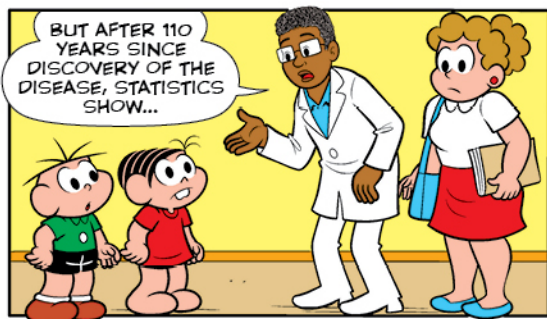


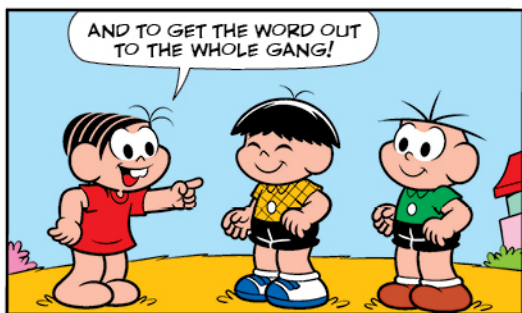
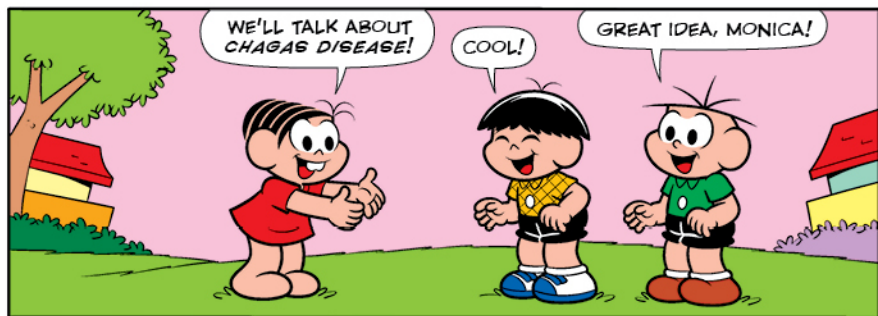
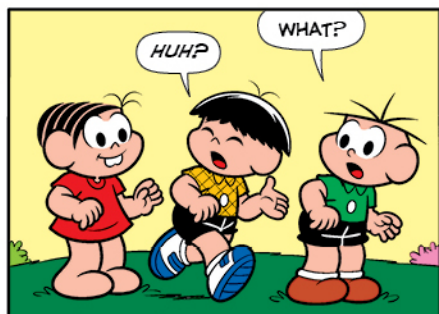
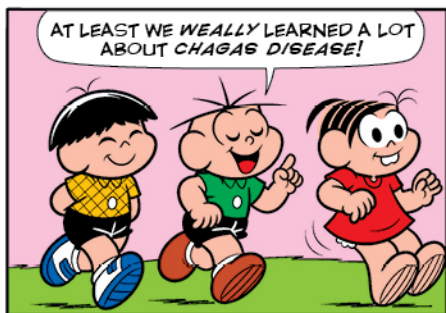
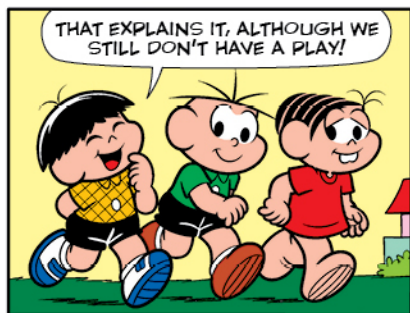


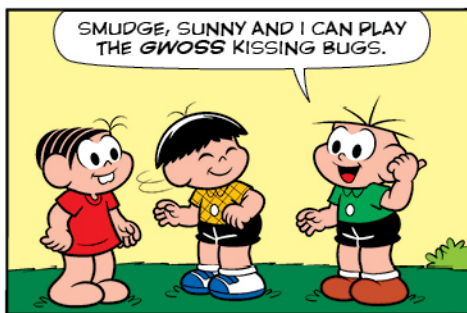
CHAGAS WAS THE FIRST SCIENTIST IN THE WORLD TO DESCRIBE THE COMPLETE DISEASE CYCLE!



*THAT'S WHY HE WAS NOMINATED TWICE FOR THE NOBEL PRIZE IN MEDICINE, IN 1913 AND IN 1921.







FUN & GAMES

USE THE TABLE TO FILL IN THE SQUARES TO REVEAL SOME OF THE SYMPTOMS OF ACUTE CHAGAS DISEASE!

	A	B	C	D	E	F	G	H	I	J	K
1	W	I	L	O	S	G	E	Q	P	C	B
2	Ç	D	F	H	Ó	R	M	N	A	K	V

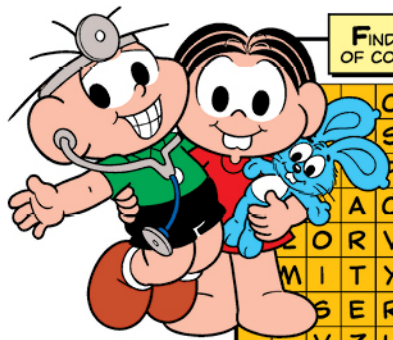
1 C2 G1 K2 G1 F2 FOR MORE THE SEVEN DAYS

2 A1 G1 I2 J2 H2 G1 E1 E1

3 E1 A1 G1 C1 C1 B1 H2 F1 IN THE FACE AND LEGS



RESP: 0 FEVER, 21 WEAKNESS, 31 SWELLING



FIND THE UNDERLINED WORDS FROM THE LIST OF COMPLICATIONS CAUSED BY CHAGAS DISEASE!

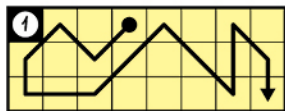
Ó	R	J	A	L	Z	H	Ó	S	J	A	V			
S	M	I	G	J	D	F	R	H	T	G	D			
P	H	V	E	H	A	A	J	V	Y	E	I			
A	Ó	E	S	H	Y	C	I	L	S	D	H	G		
L	O	R	V	A	T	T	D	O	N	V	T	Z	C	E
M	I	T	Y	R	A	R	R	Y	T	H	M	I	A	S
S	E	R	T	C	N	T	R	I	E	C	C	R	T	
V	Z	H	R	E	S	O	G	N	D	E	R	L	I	
Y	E	O	D	G	Y	C	R	G	M	G	G	I	O	
M	S	W	A	L	L	O	W	I	N	G	H	Ó	N	

INFLAMED HEART
- HEART ARRHYTHMIA
- FAINTING
- DIGESTION PROBLEMS LIKE
DIFFICULTY SWALLOWING

RESP: 1 HEART, 2 HEART, 3 ARRHYTHMIA, 4 SWALLOWING

MAURICIO

COPY THE LINE IN TABLE 1 INTO TABLE 2 TO REVEAL THE DATE WORLD CHAGAS DAY IS CELEBRATED!



2

R	U	A	R	Q	N	E
I	B	P	U	N	T	E
L	F	O	H	S	F	E



RESP: 0 APRIL FOURTEENTH

Doctors Without Borders/Médecins Sans Frontières (MSF) and the Maurício de Sousa Institute joined forces to produce this special edition of the Monica and Friends comic book about Chagas disease. The World Health Organization (WHO) estimates it affects 6 to 7 million people worldwide and another 75 million are at risk of contamination.



Chagas is a neglected disease that affects vulnerable populations and can be asymptomatic for several years. Therefore, many patients do not receive diagnosis or treatment. Yet, the disease can be prevented, treated and cured. Hence the extreme importance of knowing about the topic and seeking health care.

MSF is an international organisation that provides independent, neutral and impartial medical assistance to people affected by humanitarian crises.

TO LEARN MORE, GO TO: [MSF.ORG](https://www.msf.org)

Produced by



Support

